

SQUADRON 53

Introducing a new design standard
Meet the beautiful Squadron 53



Every. Perfect. Detail.

APRIL 2017



No line or curve is left unconsidered

Let it be said with undeniable certainty that nothing was left to chance when it came to designing and building the Squadron 53.

Every precisely-placed curve, every elegant edge, every understated shade of colour has its place in the grand scheme of things. And simply because absolute attention to detail and a genuine appreciation of quality go hand-in-hand.

For us, painstakingly handcrafting an object of luxury such as the Squadron 53 is a matter of personal enjoyment and inner satisfaction...both ours and yours. In fact, you have just to run your hand over the perfectly matched grain of the 53's woodwork, or take in the graceful arch of its swept flybridge, or immerse yourself in a space so thoroughly considered to know it's all true.

Engineered to be greater than the sum of its parts

When we embarked on our new design vision for the Squadron 53, we made a conscious decision to be bold. We even dared to re-imagine the classic Fairline form in collaboration with one of Italy's most exciting yacht designers, Alberto Mancini. But we never did so at the expense of our uncompromising, engineering heritage.

Which means every feature on the Squadron 53 – whether you can immediately see it, or not – has been carefully thought about and assembled with the entire yacht in mind.

- **Exterior styling by Alberto Mancini**
- **Foredeck seating**
- **3-person cockpit sunpad**
- **Skylight above lower helm**
- **3 or 4 cabin layout**
- **Flat floor from the cockpit to lower helm**
- **Full standing height in master cabin with a flat ceiling throughout**

Optional equipment highlights:

- Submersible bathing platform
- Gyroscopic stabilisation
- Single berth crew cabin
- Harmon Karden audio upgrade
- Marble upgrade throughout the interior
- A choice of shaft driven engines:
 - Twin Volvo D11-675 with 1,350mhp and a 30 knot estimated maximum speed
 - Twin Volvo D11-725 with 1,450mhp and a 32 knot estimated maximum speed
 - Twin Caterpillar C12.9 with 1,700mhp and a 34 knot estimated maximum speed

Designed to
take your breath away







[INTRODUCTION](#)

[MAIN FEATURES](#)

[EXTERIOR DESIGN](#)

[INTERIOR DESIGN](#)

[DIMENSIONS](#)

[FLOOR PLANS](#)

[FULL SPECS](#)

[DEALERS](#)

True style is beyond skin-deep

In the spirit of building the perfect yacht at every possible level, we have also carefully created four different interior design schemes for you to choose from:



AMALFI

Inspired by Liguria's local architecture, this scheme exudes the sunny warmth synonymous with fragrant Italian lemon trees and the umbrella-lined shores of the Amalfi coast.



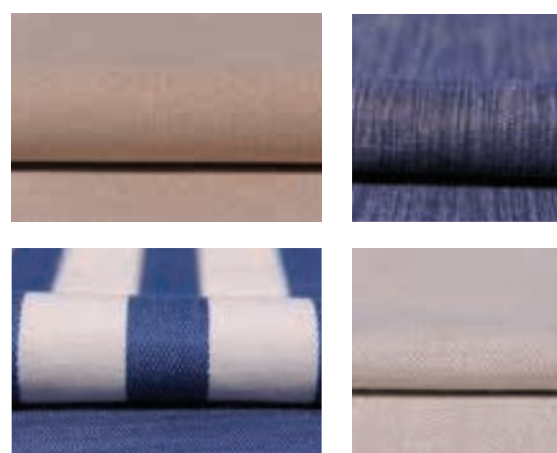
CAPRI

Understated, earthy colours, effortlessly combined with rich natural textures. All the hallmarks of an interior design collection that is as gentle as the Mediterranean breeze.



HAMPTONS

Evoking elegant vintage design cues, whilst offering a bold and contemporary interpretation of the luxury that was once the preserve of America's East Coast.



ST. TROPEZ

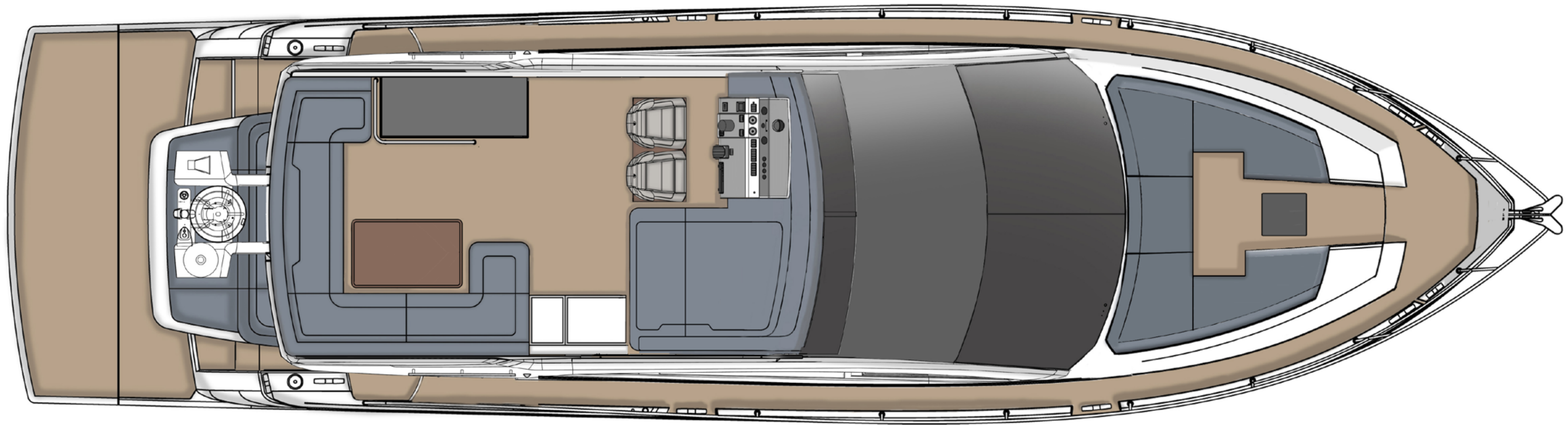
An ode to the sea where all manner of deep, oceanic blues tastefully swirl with muted greys, delicate creams and classic nautical motifs.



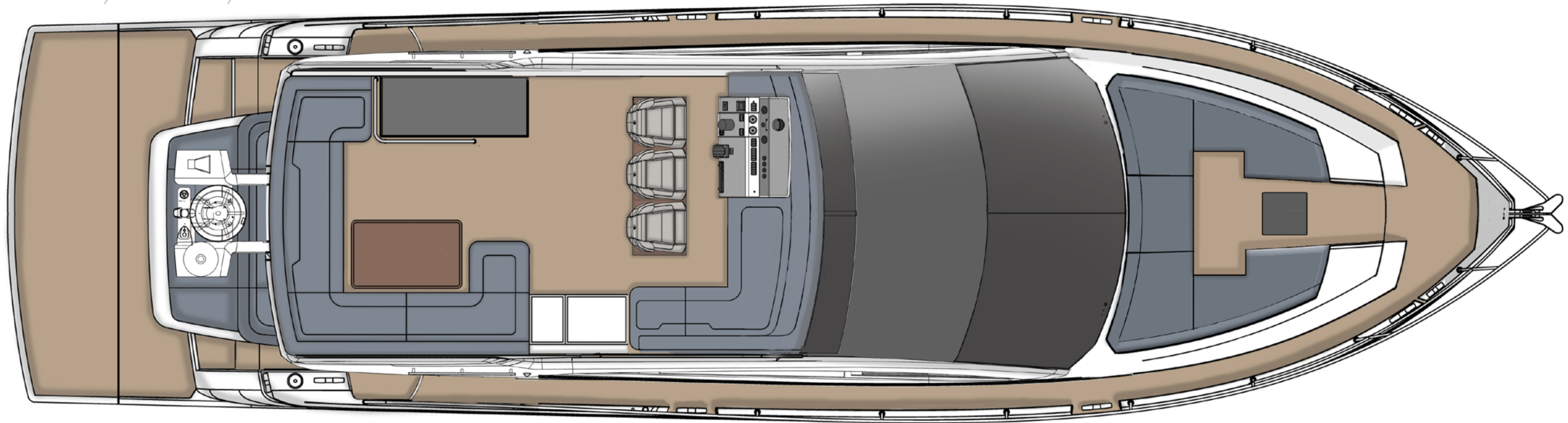
Beautifully balanced proportions

- Length overall (inc. pulpit): 55ft 6in (16.92m)
- Length overall (ex. pulpit): 53ft 6in (16.32m)
- Beam: 14ft 10in (4.52m)
- Number of berths: 6 - 7
- Draught: 3ft 11in (1.20m)
- Height above waterline (unloaded): 18ft 2in (5.56m)
- Transport height: 17ft 1in (5.15m)
- Dry weight (approx.): 21.16 imp. tons / 23.69 US tons (21,000kg)
- Fuel capacity: 530 gallons / 637 US gallons (2,412 litres)
- Water capacity: 120 gallons / 145 US gallons (550 litres)

Twin Helm



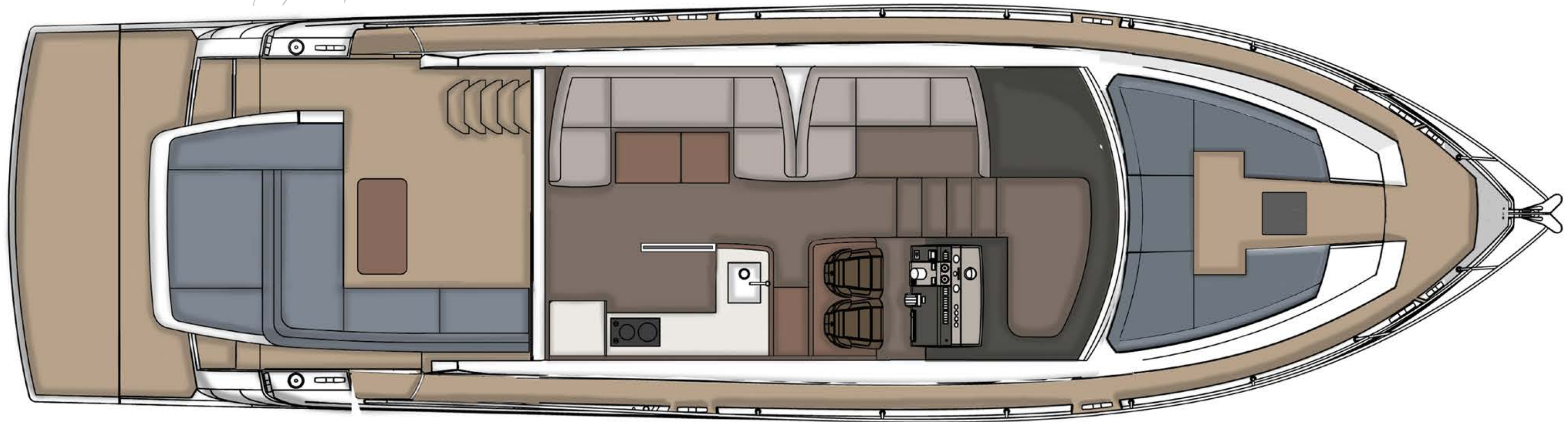
Triple Helm Option



Deck Plan – Flybridge

This has to be one of our favourite spaces on the Squadron 53, with its uninterrupted 360° views and tremendous entertainment potential.

Main Deck Galley Up & Aft



Main Deck Galley Up & Forward



Deck Plan – Main Deck

We are also very happy to point out that the Squadron 53 is the first Fairline yacht of its size to feature a cleverly designed seating area on the foredeck.

Main Deck Galley Down



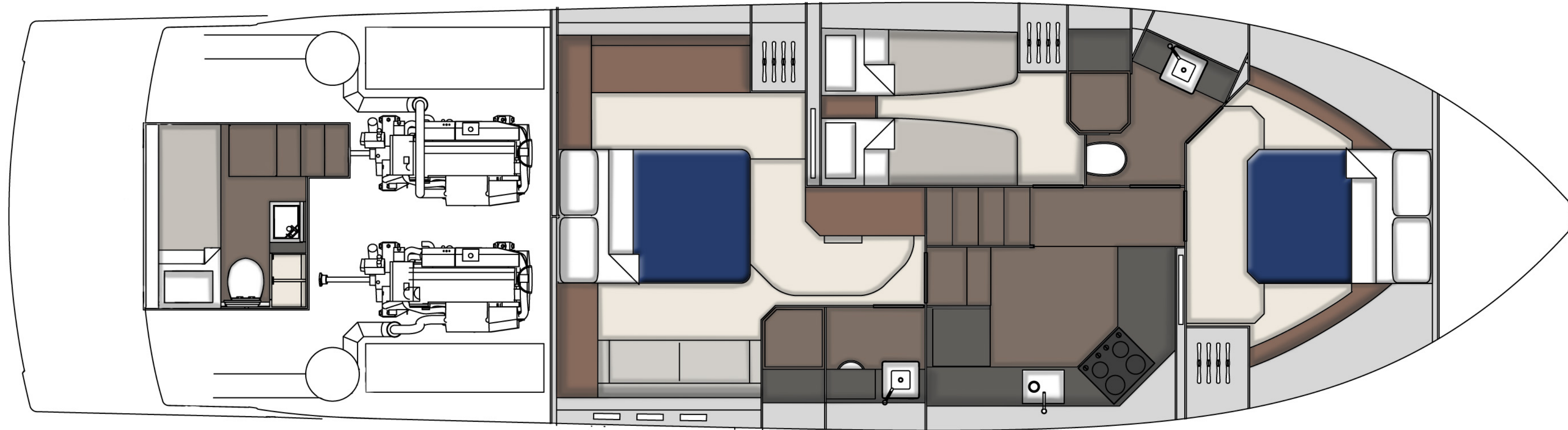
Sideboard in Lieu of Sofa



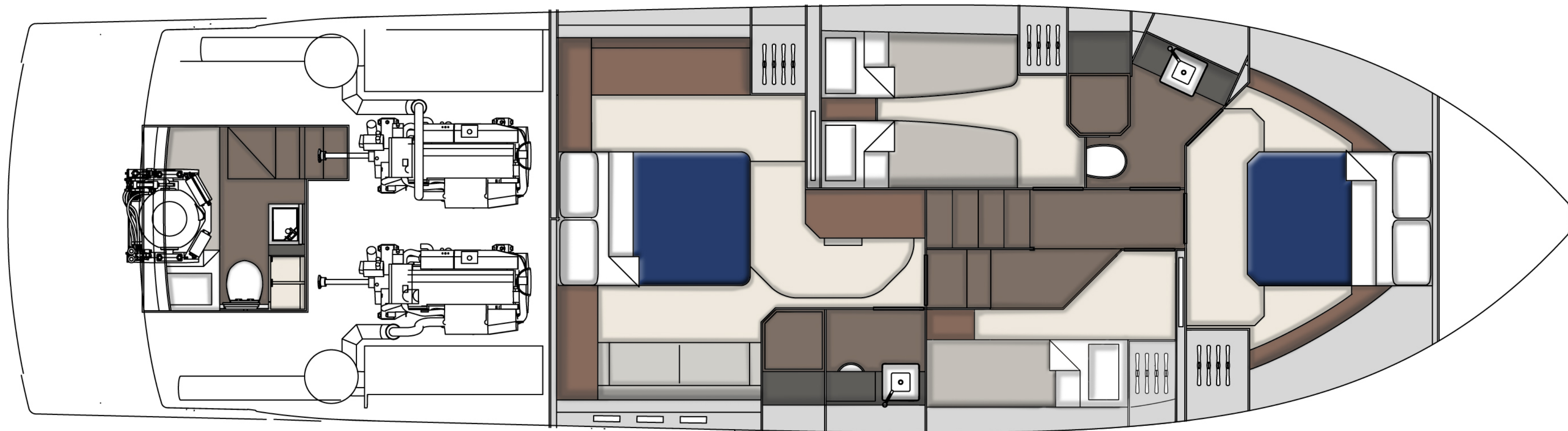
Deck Plan – Main Deck

Continued

Lower Deck Three Cabin & Galley Down



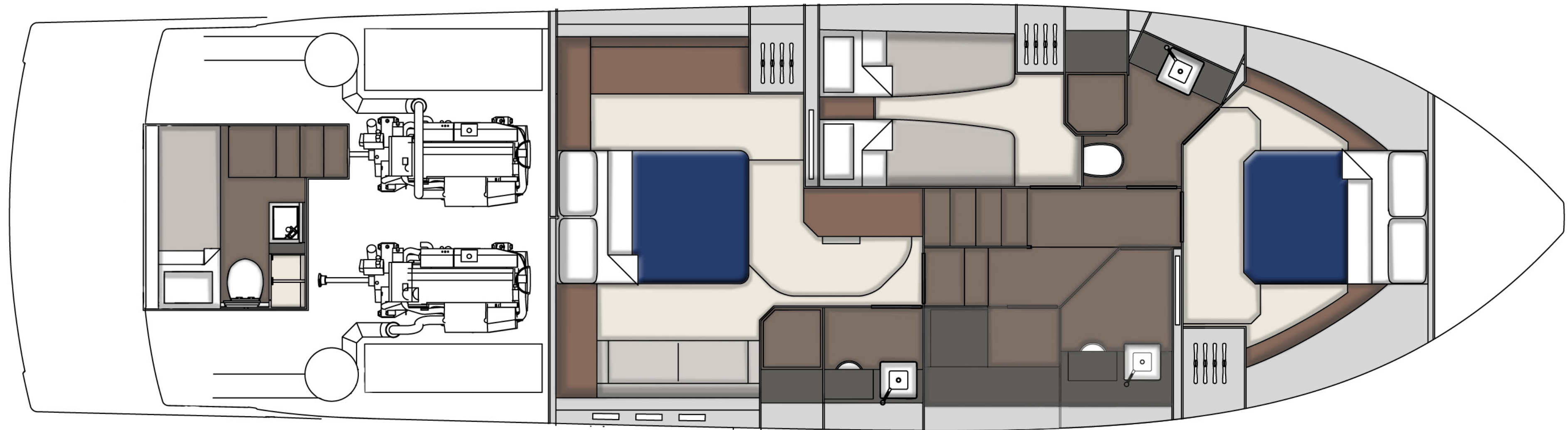
Lower Deck Four Cabin



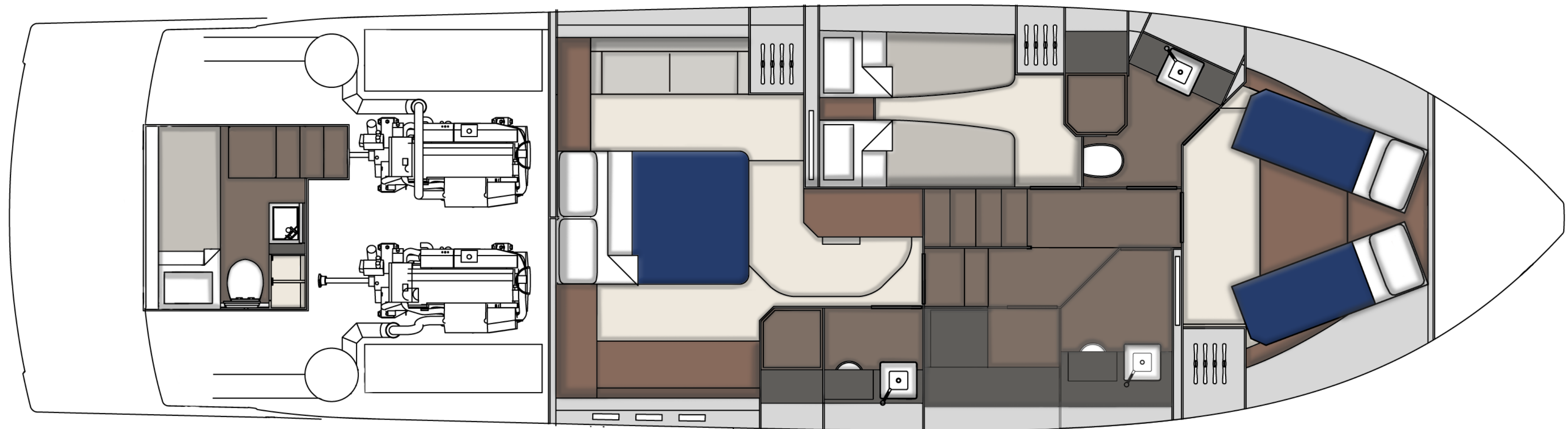
Deck Plan – Lower Deck

Spacious, airy and the epitome of on-board luxury, the lower deck is also fully customisable to suit your needs. You can choose between either a 3 or 4-cabin configuration.

Lower Deck Three Cabin With Day Head & Utility



Lower Deck Three Cabin With Day Head & Utility, Showing Optional Scissor Berth



Deck Plan – Lower Deck

Continued

Finally, everything else that goes into making the perfect yacht...

DECK

Anchor chain locker
Anchor winch (electric)
Anchor winch controls
Bathing platform ladder
Calibrated anchor chain (50m / 27.3 fathoms)
Ensign & staff
Fender set
Foredeck drinks holders
Foredeck glazing
Foredeck stowage lockers
Foredeck seating
Fuel fillers
Full set of IMCO navigation lights
Handrail
Hot & cold water transom shower
Moulded non-slip deck surface
Remote control searchlight
Riding light
Self-stowing Delta® anchor (25kg)
Stainless steel aft fairleads
Stainless steel bow fairleads
Stainless steel bow, cockpit, stern & twin spring cleats
Stainless steel gunwale with rubber inserts
Stainless steel pulpit
Teak laid bathing platform
Twin horns
Water filler
Windscreen washers
Windscreen wipers

FLYBRIDGE & SECOND HELM POSITION

12V weatherproof socket
Access hatch
Adjustable/tilt steering wheel
Bilge pump warning lights & audible alarms
Bolstered helm seating
Bow thruster controls
Drinks holders
Echosounder & speedometer/distance log repeater(s) with sea water temperature read out
Electronic single-lever throttle & gear controls for port & starboard engines
Fire extinguisher
Flybridge bar unit with refrigerator & sink
Garmin GMI 20 digital multi-function instrument system with colour display
Helm positioned to port for visibility through flybridge hatch
Hi/Lo teak table
High speed magnetic compass
Instrument covers

Moulded non-slip deck surface
Powered steering
Radar mast
Remote anchor winch controls
Remote control searchlight with controls at both helm stations
Repeat autopilot controls
Repeat engine bay fire extinguisher controls
Repeat flybridge engine instrumentation, controls & electronics
Rudder position indicator
Seat base covers
Seating adjacent to helm
Teak laid flybridge steps
Trim tab controls
Twin helm seats
Upholstered seating area with table, convertible to cushioned sunbathing area
VHF radio incorporating intercom
Wind-deflecting screen with grab rail

HELM POSITION

12V socket
Adjustable/tilt steering wheel
Bilge pump switches with integral operating warning lights & audible alarms
Black mesh windscreen covers
Bow thruster controls
Companion seating opposite helm with table
Controls for engine bay fire extinguisher system
Drinks holders
Electronic single-lever throttle & gear controls for port & starboard engines
Fuel gauges
Full engine instrumentation inc; tachometers, temperature gauges, audible alarms & engine hour meters
Garmin GHP 20 autopilot system
Garmin GMI 20 digital multi-function instrument system with colour display
Garmin VHF 300i marine radio
High speed magnetic compass
Opening window
Overhead glazing
Powered steering
Red night-light illumination to helm
Remote anchor winch controls
Rudder position indicator
Searchlight controls
Switches for navigation & riding lights, windscreen wipers & engine bay extractor fans
Trim tab controls
Twin helm seats

ELECTRICAL SYSTEMS

230 - 240V 50Hz
All 240V, 24V & 12V circuits (where applicable) protected by circuit breakers with main electrical load control panel
Heavy duty circuit breakers
Isolating switches to all batteries
Onan® 9.5kW generator

12 Volt

Voltage dropper from domestic batteries

24 Volt

Batteries - 2 x heavy duty batteries exclusively for port engine starting
Batteries - 2 x heavy duty batteries exclusively for starboard engine starting
Batteries - 4 x heavy duty batteries wired in parallel supplying domestic services & port engine starting
Circuit breaker for anchor winch
Emergency battery coupling system permits each engine to start from opposite battery bank
Regulated battery charger

240 Volt

Polarity check & earth leakage protection system
Power points throughout fed from shore power or generator
Regulated 75amp charger for domestic batteries
Shore power supply
Spare circuit breakers for optional equipment

COCKPIT

12V heavy duty weatherproof socket
Access to lazarette or crew cabin
Access to side deck
Bathing platform lights
Boat hook
Deck level lighting
Drinks holders
Engine bay access hatch with stainless steel gas struts
Fender stowage
‘J’ shaped cockpit seating with adjustable backrest to make sunpad
Life raft stowage
Manual bilge pumps
Mooring warps
Mooring warp stowage
Port side access
Single level floor from cockpit to saloon
Teak laid floor throughout self-draining cockpit
Teak table with drinks holder
Transom gate
White vinyl cover

INTERIOR DECOR

Choice of interior finishes from the Amalfi, Capri, Hamptons or St Tropez interior styling ranges selected by the Fairline Interior Design Team

HULLFORM & CONSTRUCTION

Antifouling protection to hull
Bow thruster
Deep ‘V’ forward 12.5° deadrise aft
Design, layout & detailing by the Fairline Design Team
Feature windows with opening portholes
Full length moulded spray deflectors
Hull/deck joint bolted & bonded
Integrally moulded engine bearers
Isophthalic gel coat backed by isophthalic resin-rich powder-bound glass mat
Resin infused cored hull & liner with hand-laid deck & components

Polyurethane foam cores throughout deck for strength & thermal insulation

SALOON

40” Samsung TV with Fusion AV750 DVD/Radio & wireless connectivity
Coffee table converts to dining table
FAIRLINE EDITION durable tumblers (set of 6)
Overhead lighting
Sideboard with stowage
Sliding patio door to cockpit
Sofas to port & starboard with stowage

GALLEY

Avonite work surface
Chopping board to sink infill
Crockery stowage
Extractor fan
FAIRLINE EDITION melamine dinner service (24-piece, 6 place settings)
Fire extinguisher
First aid kit
Full height fridge/freezer
Induction hob
Integrated waste bin
Microwave combi oven
Overhead lighting
Random oak floor
Sink with hot & cold mixer tap
Stowage cupboards & drawers

LOBBY

Access to electrical control panel
Access to master cabin, guest cabins & day head
Handrail
Lighting to stair risers
Space for (optional) domestic appliance

ACCOMMODATION

Master Cabin

Aluminium venetian blinds
Double bed with storage drawers
Feature windows with opening portholes
Mirror
Overhead feature lighting
Reading lights
Sofa
Vanity unit with stool
Wardrobe

Master En suite

Aluminium venetian blinds
Avonite vanity unit locker & basin with hot & cold pressurised water
Electric silent-flush freshwater toilet
Extractor fan
Full set of bathroom fittings
Full size shower with seat & hinged door
Large hull window with single opening porthole
Mirror
Mirrored lockers
Overhead lighting
Random oak floor
Shower tray automatic pump-out system

Forward Guest Cabin

Aluminium venetian blinds
Bedside table
Double bed with storage drawers
Escape hatch to foredeck
Feature windows with single opening porthole
Overhead glazing with blind
Overhead lighting
Reading lights
Wardrobe with mirrored doors

Forward Cabin En suite/Day Head

Aluminium venetian blinds
Day access
Electric silent-flush freshwater toilet
Extractor fan
Full set of bathroom fittings
Full standing height shower with hinged door
Mirror
Mirrored lockers
Overhead lighting
Random oak floor
Shower tray automatic pump-out system
Vanity unit locker & basin with hot & cold pressurised water

Port Guest Cabin

Aluminium venetian blinds
Bedside table
Feature windows with single opening porthole
Full length berths x 2
Mirror
Overhead lighting
Reading lights
Wardrobe

Starboard Guest Cabin

Bedside table
Bunk berths x 2
Mirror
Wardrobe

Lazarette

Access through hatch in cockpit seating

Crew Cabin

(optional)
Access through hatch in cockpit seating
Electric silent-flush freshwater toilet
Feature window with blind
Full length berth
Hanging locker
Mirror
Opening porthole
Overhead lighting
Power point
Random oak floor
Sink with hot & cold mixer tap

ENGINES & STERNGEAR

Automatic bilge pumps for forward bilge, engine bay & rudder bay with manual ‘on’ override
Automatic engine bay fire extinguisher system
Dripless shaft seals
Electric engine bay fans
Electro-hydraulic trim tabs with cathodic protection
Engine air intakes
Engine bay lights
Engine room soundproofing
Exhaust overheat warning system
High capacity emergency manual bilge pump system with dedicated valves
Manganese bronze ‘P’ brackets
Manganese bronze propellers contra-rotating
Sea cocks on all inlets/outlets below waterline
Stainless steel alloy shafts

FUEL SYSTEM

Changeover valve system enabling each engine to draw fuel from / return fuel to, either tank
Emergency fuel shut-off valves accessible via cable-operated remote control
High capacity water separators & fuel filters
Individual fillers & vents to port & starboard
Twin fuel tanks

FRESHWATER SYSTEM

Automatic, pressurised supply
Calorifier hot water system
Water tank

WASTE WATER SYSTEM

Holding tank (170 litres) with electric macerator pump-out

USA SPECIFICATIONS

(in addition to, or in lieu of, those listed above)
Voltage - 2 x 110V (220V) 60Hz

Whilst every effort is made to keep all sales literature up to date, it should not be regarded as an infallible statement of current specifications and does not constitute an offer for the sale of any particular boat. We continually seek to improve the specification and design of our boats, so alterations and upgrades to specifications take place continually.

Appointed dealers are not agents of Fairline Yachts Ltd and are not authorised to commit Fairline Yachts Ltd by any express or implied undertaking or representation.

Performance Figures: Power quoted in our literature for diesel inboard engines is crankshaft output.

Performance Estimates: Performance estimates are given in good faith, but are in no way guaranteed for any particular model. Dirt on the bottom of the boat, damage to the propellers, engine tuning, external water and air temperatures, and the weight of the crew, fuel and water carried can all adversely affect performance. For those and other reasons we can give no performance guarantees.

An unrivalled dealership network

Just like the many parts that make up one of our extraordinary yachts, so too are international dealers handpicked and perfectly placed to cover anything and everything you could want from Fairline (you can visit [fairline.com](https://www.fairline.com) for details of your nearest dealer).

- | | | | | |
|-------------------------------|----------------------|----------------------|--------------------------|----------------------------|
| Fairline Argentina | Fairline Côte d’Azur | Fairline Indonesia | Fairline Morocco | Fairline Singapore |
| Fairline Benelux & W. Germany | Fairline Croatia | Fairline Israel | Fairline New South Wales | Fairline Sotogrande |
| Fairline Brazil | Fairline Cyprus | Fairline Italia | Fairline New York | Fairline South Africa |
| Fairline Cala d’Or | Fairline Denmark | Fairline Japan | Fairline New Zealand | Fairline South Mallorca |
| Fairline Cape Town | Fairline Eastbourne | Fairline Korea | Fairline North Mallorca | Fairline Southampton |
| Fairline Channel Islands | Fairline Finland | Fairline Malta | Fairline Norway | Fairline Sverige |
| Fairline Chertsey | Fairline Florida | Fairline Marbella | Fairline Philippines | Fairline Switzerland |
| Fairline Chesapeake | Fairline Greece | Fairline Menorca | Fairline Poland | Fairline Thailand |
| Fairline China | Fairline Hong Kong | Fairline Mexico | Fairline Portugal | Fairline Turkey |
| Fairline Colombia | Fairline Ibiza | Fairline Middle East | Fairline Queensland | Fairline Victoria |
| Fairline Costa Blanca | Fairline India | Fairline Monaco | Fairline Russia | Fairline Western Australia |

